

# Food Services

RESTAURANT | PROCESSING | PACKAGING

APRON



COVER



CHEF

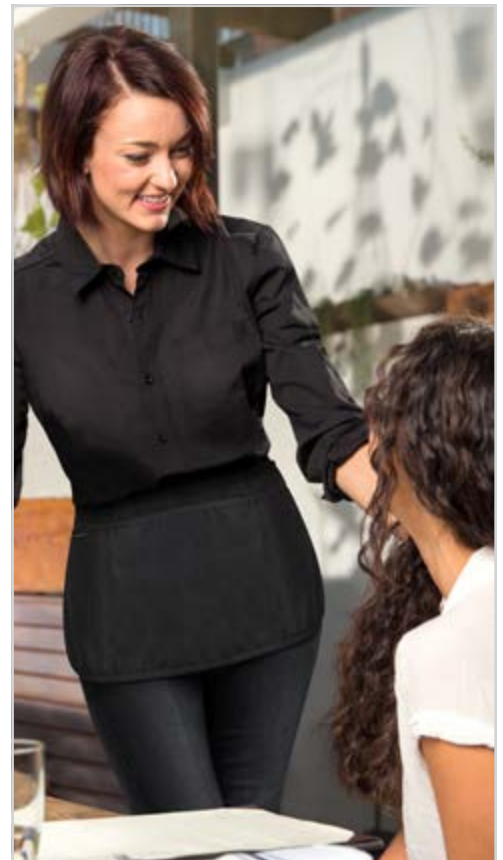


# FOOD SERVICES SOLUTIONS

American Dawn is the industry leader in Linens, Towels, Aprons and Chef Apparel. Seven in ten US restaurants use ADI products, and our table linens feature Made In USA Milliken Signature Plus fabrics.

At American Dawn, over 16,000 SKUs of reusable textile products are available with same day shipping. Featuring world class design and industrially launderable, environmentally friendly fabrics, American Dawn has the right product... on time, every time.

**AMERICANDAWN**<sup>®</sup>  
c o l l e c t i o n



# Contents

WHERE TO FIND WHAT YOU NEED



● Greenie	Page 2
● Lunchkin	Page 3
● Chef Apparel	Page 4 - 13
● Cover Apparel	Page 14 - 23
● HACCP Line	Page 22 - 23
● Aprons	Page 24 - 29
● Kitchen Towels	Page 30 - 35
● Napery	Page 36 - 43
● Custom Garments	Page 44 - 47
● Global Footprint	Page 48 - 49





MADE FROM  
**RECYCLED**  
PLASTIC BOTTLES



*Saving the Planet One Meal at a Time*  
**THE GREENIE™**

- Replaces paper napkins to save up to 60 million trees per year
- Smaller size allows more napkins per wash load
- Adds up to 15 billion pounds of oxygen per year
- Saves up to 5 billion pounds of trash per year
- Made from recycled plastic bottles
- Never ironed, less energy use
- Lasts over 100 wash cycles
- Natural look & feel
- Available in 12"x15"

## The Greenie® has its own color story:

- Green for our plant life
- Blue for our water and air
- Yellow for our sun and energy



**Two cents** for every  
napkin donated to environmental education!

- One cent to NEEF,  
National Environmental Education Fund
- One cent to TRSA,  
Textile Rental Education & Research Trust Fund

Fabric by *Milliken*  
Made in USA with recycled polyester

# Lunchkin™

by ADI

The Lunchkin™ is America's choice to replace paper napkins! At breakfast and lunch, if every American uses reusable linen napkins instead of paper, we can save 60,000,000 trees per year! That means less water use, less energy use, less waste in landfills, less toxic paper production chemicals. And the best part... you create a fine dining experience while helping your bottom line.

Replaces single use paper napkins to save you money

Lasts over 100 wash cycles

Never ironed, less energy use

Fabric made from recycled plastic bottles

Saves up to 5 billion pounds of trash per year

Creates a better dining experience and sets you apart in the marketplace



The Lunchkin™ is 12" x 15"

## Colors Available

Black | White | Hazelnut Brown | Palm Green

Caribbean Blue | Vanilla Bean | Earth Green

Milliken

Fabric Made by Milliken in USA.





# Chef Apparel

FROM CHEF COATS TO PANTS, WE HAVE WHAT IS NEEDED  
TO COMPLETE YOUR CHEF'S ENSEMBLE



# CHEF COATS



 **SHORT SLEEVE**  
AVAILABLE

## KNOT BUTTON CHEF COAT

White, Open Cuff, 1 Chest Pocket, 1 Thermometer Pocket, Knot Closure

**1401KWHT**

65% Polyester / 35% Cotton Twill | XS - 5X | 7.20oz/sq yd  
Colors: White

**1403KWHT**

100% Cotton Twill | 28 - 56 | 7.20oz/sq yd

Colors: White

**1403TWHT**

100% Spun Polyester Twill | XS - 6X | 7.20oz/sq yd

Colors: White

**A1538BWHT**

100% Spun Polyester Poplin Weave | XS - 6X | 7.20oz/sq yd

Colors: White



 **SHORT SLEEVE**  
AVAILABLE

## PEARL BUTTON CHEF COAT

White, Open Cuff, 1 Chest Pocket, 1 Thermometer Pocket, Pearl Buttons

**A0953BWHT**

100% Spun Polyester Poplin Weave | XS - 6X | 7.20oz/sq yd  
Colors: White

**A1311BWH**

100% Spun Polyester Twill | XS - 6X | 6.00oz/sq yd

Colors: White

**1401BWHT**

65% Polyester / 35% Cotton Twill | XS - 5X | 7.20oz/sq yd

Colors: White

**A2487BLAK**

100% Spun Polyester Twill | XS - 6X | 7.00oz/sq yd

Colors: Black



 **SHORT SLEEVE**  
AVAILABLE

## MESH BACK CHEF COAT

White, Open Cuff, 1 Chest Pocket, 1 Thermometer Pocket, Pearl Buttons

**1450WHTMH**

65% Polyester / 35% Cotton Twill | XS - 6X | 5.50oz/sq yd  
Colors: White



 **SHORT SLEEVE**  
AVAILABLE

## BLACK BUTTONS CHEF COAT

White, Open Cuff, 1 Chest Pocket, 1 Thermometer Pocket, Black Buttons

**1413BWHT**

100% Spun Polyester Twill | XS - 6X | 6.00oz/sq yd  
Colors: White

**A1311BBK**

100% Spun Polyester Twill | XS - 6X | 6.40oz/sq yd  
Colors: Black





 **SHORT SLEEVE**  
AVAILABLE

## MILITARY BUS COAT

White, Open Cuff, 1 Chest Pocket, 2 Lower Pockets, Grippers

**1064GWHT**

100% Spun Polyester Twill | XS - 6X | 6.00oz/sq yd

Colors: White



 **SHORT SLEEVE**  
AVAILABLE

## 2 POCKET WAITER COAT

White, Open Cuff, 2 Lower Pockets, White Buttons

**1054BWHT**

100% Spun Polyester Plain Weave | XS - 4X | 6.00oz/sq yd

Colors: White



 **SHORT SLEEVE**  
AVAILABLE

## OUTSIDE POCKET WAITER COAT

White or Navy Blue, 1 Outside Chest Pocket, 2 Outside Lower Pockets, Button Closure

**A1537B**

100% Spun Polyester Poplin Weave | 30 - 64 | 5.50oz/sq yd

Colors: White, Navy Blue



 **SHORT SLEEVE**  
AVAILABLE

## 1 INSIDE 2 OUTSIDE POCKET WAITER COAT

White, 1 Inside Chest Pocket, 2 Outside Lower Pockets, Gripper Closure

**A1542BWHT**

100% Spun Polyester Poplin Weave | XS - 5X | 5.50oz/sq yd

Colors: White

# EXECUTIVE CHEF COATS



 **SHORT SLEEVE**  
AVAILABLE

## WHITE WITH BLACK TRIM CHEF COAT

White, Open Cuff with Black Trim, Black Collar, 1 Chest Pocket, 1 Thermometer Pocket, Black Buttons

**A2141001**

100% Spun Polyester Twill | SM - 6X | 7.20oz/sq yd



 **SHORT SLEEVE**  
AVAILABLE

## WHITE WITH BLACK PIPING CHEF COAT

White, Open Cuff with Black Piping, Black Piping on Collar, 1 Chest Pocket, 1 Thermometer Pocket, Knot Buttons

**A1409KWHT**

100% Spun Polyester Twill | SM - 6X | 7.20oz/sq yd



 **SHORT SLEEVE**  
AVAILABLE

## BLACK EXECUTIVE SLANTED FRONT CHEF COAT

Black, Open Cuff with White Piping, White Piping on Collar, Pearl Buttons

**108828BLK**

65% Polyester \ 35% Cotton Twill | XS - 6X | 5.00oz/sq yd



 **SHORT SLEEVE**  
AVAILABLE

## WHITE EXECUTIVE SLANTED FRONT CHEF COAT

White, Open Cuff with Black Piping, Black Piping on Collar, Black Buttons

**108828WHT**

65% Polyester \ 35% Cotton Twill | XS - 6X | 5.00oz/sq yd





# COOK SHIRTS

## NO POCKET SHIRT WITH GRIPPERS

No Pocket, Gripper Closure

### **2048GWHTVR**

100% Spun Polyester Plain Weave | XS - 6X | 4.60oz/sq yd

Colors: White

### **2050GWHT**

80% Polyester \ 20% Cotton Poplin | XS - 6X | 4.40oz/sq yd

Colors: White

Size Code: XS, SM, MD, LG, XL, 2X, 3X, 4X, 5X, 6X



## CHEST POCKET SHIRT WITH GRIPPERS

1 Chest Pocket, Gripper Closure

### **2051GWHT**

80% Polyester \ 20% Cotton Poplin Weave | XS - 6X | 5.00oz/sq yd  
Colors: *White*

### **A2051GWH**

100% Spun Polyester Poplin Weave | SM - 6X | 4.60oz/sq yd  
Colors: *White*

### **2090BLK**

100% Spun Polyester Poplin Weave | XS - 6X | 4.50oz/sq yd  
Colors: *Black*

## CHEST POCKET SHIRT WITH BUTTONS

1 Chest Pocket, Button Closure

### **2051BWHT**

100% Spun Polyester Poplin Weave | XS - 5X | 4.40oz/sq yd  
Colors: *White*



# CHEF PANT

## BAGGY CHEF PANT

2 Side Pockets, Tie Closure, Elastic Waist, Hemmed

### PANTCHK

100% Spun Polyester Plain Weave | 6.00oz/sq yd | XS - 5X

Colors: *Checked*

### A1020BLAK

100% Spun Polyester Twill | 7.00oz/sq yd | XS - 6X

Colors: *Black*

### PANTSTP

100% Spun Polyester Poplin Weave | 6.00oz/sq yd | XS - 5X

Colors: *Striped*

### 409ZHDT

100% Spun Polyester Twill | 6.00oz/sq yd | XS - 6X

Colors: *Houndstooth*

## COOK PANT

2 Side Pockets, 2 Back Pockets, Eyelet Closure, Unhemmed

### A1755BCK

100% Spun Polyester Plain Weave | 6.50oz/sq yd | 28 - 60

Colors: *Checked*

### A1755WHT

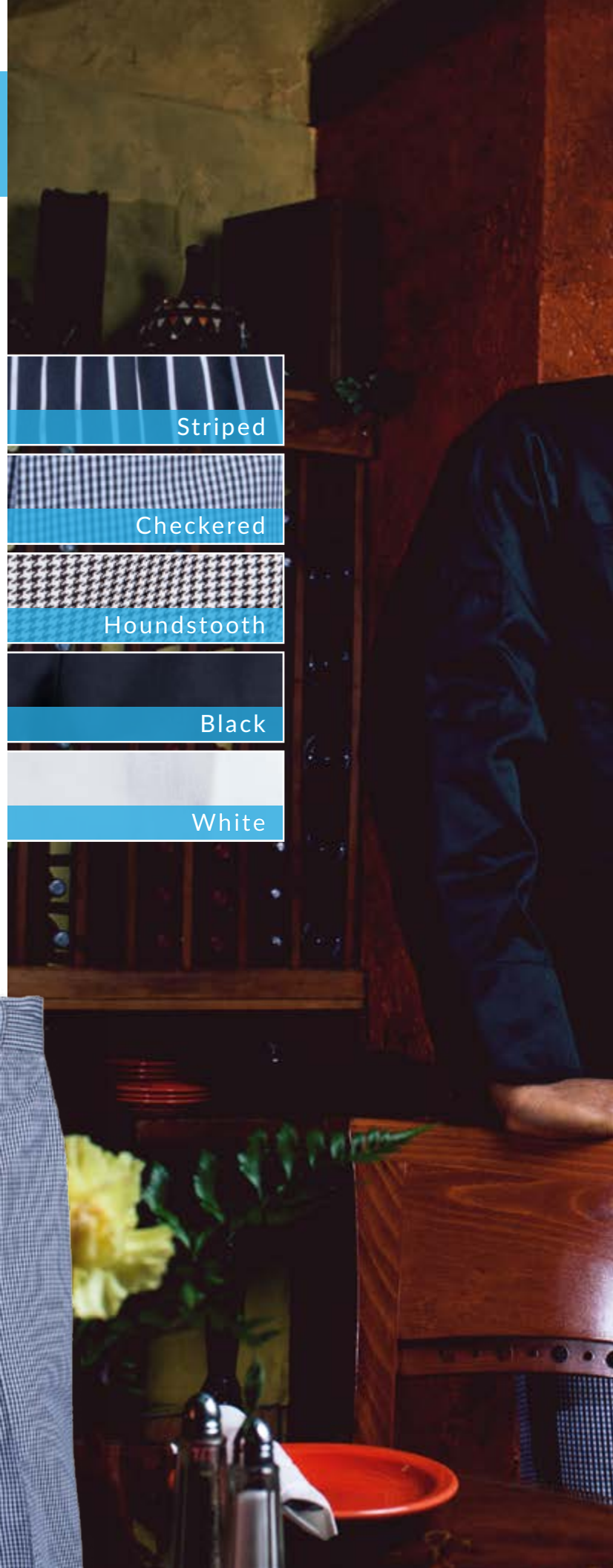
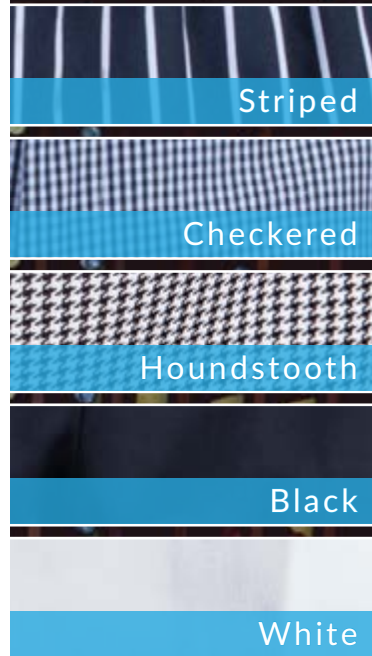
100% Spun Polyester Twill | 6.50oz/sq yd | 28 - 60

Colors: *White*

### 1755TWHT

65% Polyester / 35% Cotton Twill | 7.20oz/sq yd | 28 - 60

Colors: *White*





Color Code: WHT - White, BLK - Black  
Size Code: SM, MD, LG, XL, OSFA

**Chef  
Apparel**



## CHEF HAT

---

10" Crown

**2004WHT**

100% Cotton Twill | OSFA | 7.00oz/sq yd

Colors: White



## SKULL CAP

---

White or Black

**AM10182**

65% Polyester \ 35% Cotton Twill | SM | 7.00oz/sq yd

Colors: White, Black

**AM10183**

65% Polyester \ 35% Cotton Twill | MD | 7.00oz/sq yd

Colors: White, Black

**AM10184**

65% Polyester \ 35% Cotton Twill | LG | 7.00oz/sq yd

Colors: White, Black

**AM10185**

65% Polyester \ 35% Cotton Twill | XL | 7.00oz/sq yd

Colors: White, Black



## NECKERCHIEF

---

38" Triangle Base X 19.25" Height

**P1081WHT**

80% Polyester \ 20% Cotton Poplin Weave | OSFA | 6.40oz/sq yd

Colors: White, Black

**T1081WHT**

65% Polyester \ 35% Cotton Twill | OSFA | 7.20oz/sq yd

Colors: White, Black



# Cover Apparel

WHEN COVER IS A NECESSITY IN YOUR LINE OF WORK,  
WE HAVE WHAT YOU NEED - FROCKS, SMOCKS, AND COATS





# COATS



## 3 POCKET GRIPPER LAB COAT

1 Chest Pocket, 2 Lower Pockets, Gripper Closure

**1065WHT**

65% Polyester / 35% Cotton Twill | SM - 4X | 5.00oz/sq yd

Colors: White



## 3 POCKET BUTTON LAB COAT

1 Chest Pocket, 2 Lower Pockets, Button Closure

**1518BWHT**

80% Polyester / 20% Cotton Poplin Weave | XS - 5X | 5.00oz/sq yd

Colors: White



**A1535BWHT**

100% Spun Polyester Poplin Weave | XS - 5X | 5.50oz/sq yd

Colors: White



## OUTSIDE POCKET COUNTER COAT

White or Navy Blue, 1 Outside Chest Pocket, 2 Outside Lower Pockets, Button Closure

**A1537B**

100% Spun Polyester Poplin Weave | 30 - 64 | 5.50oz/sq yd

Colors: White, Navy Blue



## INSIDE POCKET COUNTER COAT

White, 1 Inside Chest Pocket, 2 Outside Lower Pockets, Gripper Closure

**A1542BWHT**

100% Spun Polyester Poplin Weave | XS - 5X | 5.50oz/sq yd

Colors: White





### FEMALE LAB COAT

1 Chest Pocket, 2 Lower Pockets, Button Closure

**A2317BWHT**

100% Spun Polyester Poplin Weave | XS - 6X | 5.50oz/sq yd

Colors: White



### NO POCKET FEMALE LAB COAT

No Pockets, Button Closure, Knit Cuff

**2558GWHT**

100% Spun Polyester Plain Weave | XS - 6X | 6.00oz/sq yd

Colors: White



### 1 INSIDE & 2 OUTSIDE POCKET LAB COAT

1 Inside Chest Pocket, 2 Outside Lower Pockets,  
Gripper Closure

**A1541G**

100% Spun Polyester Poplin Weave | XS - 6X | 5.50oz/sq yd

Colors: White, Navy Blue, Light Blue



### NO POCKET LAB COAT

No Pocket, Gripper Closure

**A1543G**

100% Spun Polyester Poplin Weave | XS - 6X | 5.50oz/sq yd

Colors: White, Light Blue





### 3 POCKET FROCK

1 Chest Pocket, 2 Lower Pockets, Gripper Closure

#### 1119GWHT

100% Spun Polyester Twill | XS - 6X | 6.40oz/sq yd

Colors: White



#### A0950GWHT

100% Spun Polyester Plain Weave | XS - 5X | 7.20oz/sq yd

Colors: White



### NO POCKET FROCK

No Pocket, Gripper Closure

#### O1114

100% Spun Polyester Plain Weave | SM - 6X | 7.00oz/sq yd

Colors: White, Navy Blue, Light Blue, Light Gray, Tan



#### A1037G

100% Spun Polyester Poplin Weave | XS - 6X | 7.20oz/sq yd

Colors: White, Navy Blue, Burgundy



#### O1114K

100% Spun Polyester Plain Weave | Knit Cuff  
SM - 6X | 7.00oz/sq yd

Colors: White, Navy Blue, Light Blue, Light Gray, Tan



### NO POCKET KNIT CUFF LAB COAT

No Pocket, Knit Cuff, Gripper at Neck, Gripper Closure

#### A1544G

100% Spun Polyester Poplin Weave | XS - 7X | 5.50oz/sq yd

Colors: White, Light Blue



### 2 INSIDE POCKET FROCK

2 Inside Lower Pockets, Gripper Closure

#### O1115

100% Spun Polyester Plain Weave | SM - 6X | 7.00oz/sq yd

Colors: White, Navy Blue, Light Blue, Light Gray, Tan





### 1 INSIDE 2 OUTSIDE POCKET FROCK

1 Inside Chest Pocket, 2 Outside Lower Pockets, Gripper Closure

**A0882GWHT**

100% Spun Polyester Poplin Weave | XS - 5X | 7.20oz/sq yd  
Colors: White



**1115K**

100% Spun Polyester Plain Weave | Knit Cuff  
SM - 6X | 6.00oz/sq yd  
Colors: White



### 3 INSIDE POCKET FROCK

1 Inside Chest Pocket, 2 Inside Lower Pockets, Gripper Closure

**A1199G**

100% Spun Polyester Poplin Weave | XS - 5X | 7.20oz/sq yd  
Colors: White, Navy Blue, Burgundy



**1116K**

100% Spun Polyester Plain Weave | Knit Cuff  
XS - 6X | 6.00oz/sq yd  
Colors: White



### COOLER COAT

2 Chest Pockets, 2 Lower Pockets, Heavy Duty Snap Closure

**1505WHT**

60% Cotton / 40% Polyester Twill | XS - 5X | 9.00oz/sq yd  
Colors: White



### LUGGER COAT

No Pockets, Side Vent, Pull Over with 2 Heavy Duty Snaps

**1504WHTIMP**

50% Polyester / 50% Cotton Heavy Twill | OSFA | 11.00oz/sq yd  
Colors: White





# WRAPS



## 3 POCKET COLLAR BUTCHER WRAP

1 Chest Pocket, 2 Lower Pockets, Collar

### A1057WWHT

100% Spun Polyester Poplin Weave | XS - 6X | 7.20oz/sq yd

Colors: White

\*Other colors available for special order



### 1525WHT

65% Polyester / 35% Cotton Twill | SM - 6X | 7.00oz/sq yd

Colors: White

\*Other colors available for special order



### 1425WHT

100% Spun Polyester Twill | XS - 6X | 6.40oz/sq yd

Colors: White

\*Other colors available for special order



## NO POCKET WRAP

No Pocket, Wraparound

### 1834

80% Polyester / 20% Cotton Poplin Weave | 3/4 Sleeve

XS - 6X | 5.00oz/sq yd

Colors: White, Navy Blue, Light Blue, Light Gray, Tan, Cadet Blue

\*Other colors available for special order



### A1317W

100% Spun Polyester Plain Weave | 3/4 Sleeve

XS - 6X | 5.50oz/sq yd

Colors: White, Light Blue, Red

\*Other colors available for special order



## 3 POCKET WRAP

1 Chest Pocket, 2 Lower Pockets

### A1316W

100% Spun Polyester Plain Weave | XS - 6X | 5.50oz/sq yd

Colors: White, Navy Blue

\*Other colors available for special order



Color Code: WHT - White, NBL - Navy Blue, LBL - Light Blue,  
LGY - Light Gray, TAN - Tan, CBL - Cadet Blue

Size Code: XS, SM, MD, LG, XL, 2X, 3X, 4X, 5X, 6X



## 3 POCKET WRAP

1 Chest Pocket, 2 Lower Pockets Wraparound

### 1853

80% Polyester / 20% Cotton Poplin Weave | Short Sleeve  
SM - 6X | 5.00oz/sq yd

Colors: White, Navy Blue, Light Blue, Light Gray, Tan, Cadet Blue

*\*Other colors available for special order*



### 1854

80% Polyester / 20% Cotton Poplin Weave | 3/4 Sleeve  
SM - 6X | 5.00oz/sq yd

Colors: White, Navy Blue, Light Blue, Light Gray, Tan, Cadet Blue

*\*Other colors available for special order*



### 1855

80% Polyester / 20% Cotton Poplin Weave | Long Sleeve  
SM - 6X | 5.00oz/sq yd

Colors: White, Navy Blue, Light Blue, Light Gray, Tan, Cadet Blue

*\*Other colors available for special order*





# HACCP

Food Processing must be safe & clean. American Dawn's HACCP Collection rises to the challenge. Our products help produce and process contaminant free products, maintain a clean food production environment and keep employees safe.





### HACCP KNIT CUFF LAB COAT

HACCP Lab Coat, Long Sleeve, Knit Cuff, Concealed Gripper Closure

**HA1521**

100% Spun Polyester Plain Weave | XS - 6X | 6.00oz/sq yd

Colors: White, Navy Blue, Medrite Gray, Tan, Wedgewood Blue



### HACCP LAB COAT

HACCP Lab Coat, Long Sleeve, Concealed Gripper Closure

**HA1519**

100% Spun Polyester Plain Weave | XS - 5X | 6.00oz/sq yd

Colors: White, Navy Blue, Medrite Gray, Tan, Wedgewood Blue



### HACCP SMOCK WRAP

HACCP Wrap Smock, Long Sleeve, Wraparound

**HA1072**

100% Spun Polyester Plain Weave | XS - 6X | 6.00oz/sq yd

Colors: White, Navy Blue, Medrite Gray, Tan, Wedgewood Blue





# Aprons

SPUN POLY APRONS LOOK GREAT FOR DAY TO DAY USE AND WITHSTAND INDUSTRIAL WASHING - BIB & WAIST APRONS



A woman with brown hair, smiling, stands in a professional kitchen. She is wearing a white short-sleeved button-down shirt, white trousers, and black loafers. Over her shirt, she wears a bright blue bib apron with a single pocket on the left side. Her hands are on her hips. The background shows stainless steel kitchen equipment, including a stove with burners and a range hood.

# BIB APRONS

## PENCIL POCKET

---

1 Pencil Pocket, 38" String

**A7301**

100% Spun Polyester Plain Weave | 28" x 33" | 7.20oz/sq yd

Colors: White, Black, Maroon, Navy Blue, Royal Blue, Red, Forest Green





## NO POCKET BIB APRON

No Pockets, 38" Color Matching Tube Tie

### A7302

100% Spun Polyester Plain Weave  
28" x 33" | 6.40oz/sq yd

Colors: White, Black, Maroon, Navy Blue,  
Royal Blue, Red, Forest Green



## STRIPED BIB APRON

Black with White Pin Stripe, No Pockets,  
36" Black Tube Tie

### ST2933

100% Spun Polyester Plain Weave  
28" x 33" | 6.70oz/sq yd

Colors: Black w/ White Pin Stripe



## 3 POCKET BIB APRON

1 Pencil Pocket, 2 Lower Pockets, 38" Color  
Matching Tube Tie

### A7759

100% Spun Polyester Plain Weave  
28" x 33" | 7.20oz/sq yd

Colors: White, Black, Maroon, Navy Blue,  
Royal Blue, Red, Forest Green



# WAIST APRONS





## NO POCKET WAIST APRON

No Pockets

**A7522**

100% Spun Polyester Plain Weave | 30" x 33"  
38" Tube Tie | 7.20oz/sq yd

Colors: White with White Tie



**7522**

100% Polyester Plain Weave | 30" x 36"  
36" Tube Tie | 6.10oz/sq yd

Colors: White with White Tie, Black with Black Tie



## 2 POCKET WAIST APRON

2 Pockets

**O7529**

100% Spun Polyester Plain Weave | 30" x 36"  
36" Tube Tie | 6.20oz/sq yd

Colors: White with Zebra Tie, Black with Black Tie



## 4 WAY WAIST APRON

No Pockets

**7622**

100% Polyester Plain Weave | 30" x 36"  
36" Tube Tie | 6.10oz/sq yd

Colors: White with White Tie, Black with Black Tie



Color Code: WHT - White, BLK - Black



## SERVER PRO WAIST APRON

3 Pockets

**O2311**

100% Spun Polyester Plain Weave | 11" x 23"  
38" Tube Tie | 6.50oz/sq yd

Colors: Black with Black Tie



# Kitchen Towels

KITCHEN TOWELS COME IN MANY DIFFERENT SIZES, COLORS,  
AND STYLES TO HELP KEEP YOUR LOCATION CLEAN AND FRESH





PREMIUM TERRY BLUE STRIPE BAR TOWEL | 569PREM

# BAR Towels

## FULL TERRY BAR TOWEL

100% Cotton, Full Terry Bar Towel



**502**  
White | 17" x 20" | 28oz/dz

**501**  
White | 17" x 20" | 30oz/dz

**532**  
White | 17" x 20" | 32oz/dz



**567**  
Blue Center Stripe | 17" x 20" | 28oz/dz

**565**  
Blue Center Stripe | 17" x 20" | 30oz/dz



**554**  
Gold Center Stripe | 17" x 20" | 30oz/dz

**556**  
Gold Center Stripe | 17" x 20" | 32oz/dz



**550**  
Green Center Stripe | 17" x 20" | 30oz/dz



**530CHU**  
Blue & Gold Center Stripes | 17" x 20" | 30oz/dz

## PREMIUM TERRY BAR TOWEL

100% Premium Cotton, Premium Low Pile Maxi Mop



**533PREM**  
White | 17" x 20" | 32oz/dz



**569PREM**  
Blue Center Stripe | 17" x 20" | 32oz/dz



**558**  
Gold Center Stripe | 17" x 20" | 32oz/dz



**557AMR**  
Green Center Stripe | 17" x 20" | 32oz/dz





## RIBBED TERRY BAR TOWEL

100% Cotton, Ribbed Terry Bar Towel



**100**  
White | 15" x 18" | 20oz/dz

**123**  
White | 17" x 20" | 24oz/dz

**301**  
White | 17" x 20" | 28oz/dz

**400**  
White | 17" x 20" | 30oz/dz

**432**  
White | 17" x 20" | 32oz/dz



## ROUTE READY BAR TOWEL

100% Cotton, Maxi Mop, Low Pile Tight Weave, Carton Packed, Route Ready Bar Towels



**533CTNCIN**  
White | 16" x 19" | 32oz/dz



**569RRCTN**  
Blue Center Stripe | 17" x 20" | 32oz/dz



**558RRCTN**  
Gold Center Stripe | 17" x 20" | 32oz/dz



**557RRCTN**  
Green Center Stripe | 17" x 20" | 32oz/dz





# KITCHEN TOWELS



## RIBBED MICROFIBER BAR TOWEL

Double Sided Rib Microfiber Bar Towel,  
80% Polyester/20% Polyamide



**M14X18WHT**  
White | 14" x 18" | 47 grams



**MICROTWLBUAM**  
Blue | 14" x 18" | 43 grams



**M14X18BLK**  
Black Center Stripe | 14" x 18" | 47 grams



**M14X18WGLDCS**  
Gold Center Stripe | 14" x 18" | 47 grams



**M14X18WBLCUS**  
Blue Center Stripe | 14" x 18" | 47 grams



## MICROFIBER TOWEL GREEN PIPING

Single Sided Rib Microfiber Bar Towel,  
80% Polyester/20% Polyamide

**MICROTWLAME1**  
White w/ Green Piping | 14" x 18" | 43 grams



## MICROFIBER TOWEL GOLD STRIPES

Microfiber Bar Towel, 80% Polyester/20% Polyamide

**MICROTWLSTRP**  
White w/ Gold Stripes | 14" x 18" | 41 grams



## GREEN CENTER STRIPE DISH TOWEL

100% Cotton, Osnaburg Dish Towel



**2739**  
Unbleached | 26" x 36" | 2.5lbs/dz

**2740**  
Bleached | 26" x 36" | 2.8lbs/dz



## GREEN BORDER DISH TOWEL

100% Cotton, Osnaburg Dish Towel



**2741**  
Bleached | 26" x 36" | 3.0lbs/dz

**2743**  
Unbleached | 30" x 36" | 3.5lbs/dz



## GRILL PAD

100% Cotton



**3400**  
10" x 14" | 3.0lbs/dz  
Colors: Assorted Stripes or White



## HERRINGBONE KITCHEN TOWEL

100% Cotton, Herringbone Twill



**2920**  
Green Center Stripe | 15" x 26" | 21oz/dz

**2924**  
Green Center Stripe | 15" x 26" | 24oz/dz

**2927**  
Green Center Stripe | 15" x 28" | 27oz/dz

**2932**  
Green Center Stripe | 30" x 32" | 52oz/dz

**2927PREM**  
Green Center Stripe | Premium Cotton | 15" x 28" | 27oz/dz



**2929**  
Blue Border Stripe | 15" x 26" | 26oz/dz

**2903**  
Blue Center Stripe | 15" x 28" | 28oz/dz

**2917PREM**  
Blue Center Stripe | Premium Cotton | 15" x 26" | 24oz/dz



**2923**  
Pink Border Stripe | 15" x 26" | 24oz/dz



## GLASS TOWEL

100% Cotton



**2407**  
Multi Red Stripe | 15" x 28" | 20oz/dz



# Napery

TABLECLOTHS TO ADD STYLE TO ANY ROOM AND NAPKINS  
TO PROVIDE THE "POP" THAT EVERYONE WILL NOTICE



Milliken®

# Signature Stripe

Table Linen

## A NEW TWIST ON SIGNATURE PLUS NAPKINS PROVIDING A FRESH LOOK

Customers notice how your tables are set and associate cloth napkins with a superior dining experience. They also know cloth napkins are not just a sign of quality but environmentally, the “right thing” to do.

Just one cloth napkin replaces on average three paper napkins per meal, saving money and environmental resources.

75% of U.S. consumers associate tables set with cloth with better food quality.

Our napkins feature a unique 18" x 22" rectangle size and are available in colors that match any decor.

Designed to be washed with bleach so Stripe colors stay true.

### STANDARD COLORS

- Orange
- Gold
- Yellow
- Sage
- Line Green
- Metallic Gray
- Raspberry
- Chocolate
- Belize Blue
- White
- Kelly Green
- Black
- Red
- Forest Green
- Blue
- Maroon
- Purple



Fabric Made in USA







The background of the advertisement is a photograph of an outdoor restaurant setting. In the foreground, a table is set with a white tablecloth, white plates, silverware, and several clear glassware items. A centerpiece of greenery and pink flowers is visible. In the background, two men in dark suits are engaged in conversation, and a woman in a dark dress is walking away. The setting appears to be a patio or terrace with a red and white striped awning.

Milliken™

Milliken®

Signature® Plus

Table Linens

## MILLIKEN SIGNATURE™ PLUS TABLE LINEN

American Dawn and Milliken create Signature Plus™ table linen products that set the standard of excellence in restaurants. Made In USA Signature Plus™ fabric outperforms all challengers in elegance, soft touch, color consistency and soil/stain release. Signature Plus™ is an environmentally responsible reusable textile; energy efficient in processing (120F).

### STANDARD COLORS

- Gold
- Maize
- Beige
- Ivory
- White
- Rust
- Peach
- Light Peach
- Bermuda Sand
- Medrite Gray
- Dark Burgundy
- Maroon
- Dusty Rose
- Pink
- Red
- Purple
- Dark Forest Green
- Forest Green
- Seafoam
- Black
- Navy Blue
- Royal Blue
- Teal
- Wedgewood Blue
- Chocolate
- Olive
- Cayenne
- Belize Blue
- Pistachio
- Sandalwood

### STANDARD SIZES

- 21 x 21
- 42 x 42
- 52 x 52
- 62 x 62
- 72 x 72
- 81 x 81
- 85 x 85
- 90 x 90
- 52 x 72
- 52 x 90
- 52 x 96
- 52 x 114
- 52 x 120
- 90" Round
- 120" Round
- 132" Round

### CUSTOM COLORS AND SIZES

Custom order sizes and colors are available upon request.



Fabric Made in USA



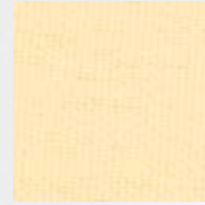
**Gold**  
GLD



**Maize**  
MZE



**Beige**  
BGE



**Ivory**  
IVY



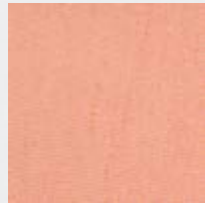
**White**  
WHT



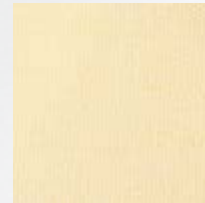
**Rust**  
RST



**Peach**  
PCH



**Light Peach**  
LPH



**Bermuda Sand**  
BSD



**Medrite Gray**  
MGY



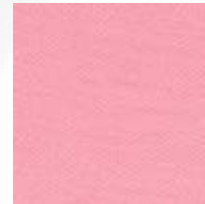
**Dark Burgundy**  
DBR



**Maroon**  
MRN



**Dusty Rose**  
DRS



**Pink**  
PNK



**Red**  
RED



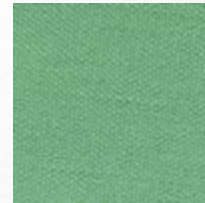
**Purple**  
PUR



**Dark Forest Green**  
DFG



**Forest Green**  
FGN



**Seafoam**  
SGN



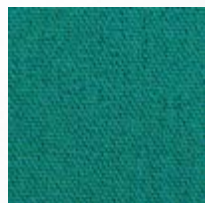
**Black**  
BLK



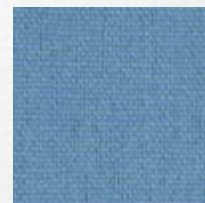
**Navy Blue**  
NBL



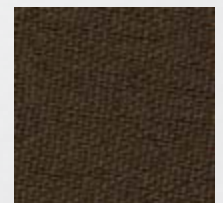
**Royal Blue**  
RBL



**Teal**  
TBL



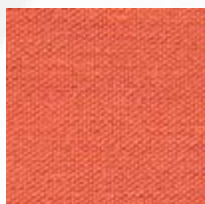
**Wedgewood Blue**  
WBL



**Chocolate**  
BRN



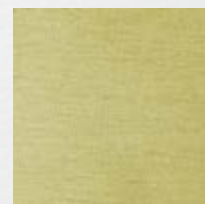
**Olive**  
PST



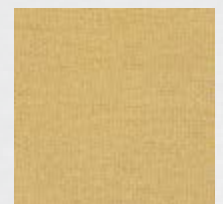
**Cayenne**  
CYN



**Belize Blue**  
BLZ



**Pistachio**  
PST



**Sandalwood**  
SWD

# PREMIUM IMPORTED NAPKINS AND TABLECLOTHS



## 100% SPUN POLYESTER NAPKINS

Available in assorted colors and weights

### 2121

100% Spun Polyester | 21" x 21" | 6.40oz/sq yd

Colors: White, Ivory, Brown, Black, Maroon, Navy Blue, Royal Blue, Purple, Red, Forest Green, Pink, Gold, Sandalwood



### S2121BLKI

100% Spun Polyester | 21" x 21" | 7.20oz/sq yd

Colors: Black



## 100% SPUN POLYESTER BISTRO NAPKINS

White Bistro Napkin with color center stripes.

### 2933

100% Spun Polyester | 18" x 26" | 7.20oz/sq yd

Colors Stripes: Black, Maroon, Royal Blue, Forest Green



## 100% SPUN POLYESTER TABLE CLOTHS

Table cloths available in assorted colors.

### 4242

100% Spun Polyester | 42" x 42" | 6.40oz/sq yd

### 5252

100% Spun Polyester | 52" x 52" | 6.40oz/sq yd

### 6262

100% Spun Polyester | 62" x 62" | 6.40oz/sq yd

### 7272

100% Spun Polyester | 72" x 72" | 6.40oz/sq yd

### 8181

100% Spun Polyester | 81" x 81" | 6.40oz/sq yd

### 8585

100% Spun Polyester | 85" x 85" | 6.40oz/sq yd

### 9090

100% Spun Polyester | 90" x 90" | 6.40oz/sq yd

### 3060

100% Spun Polyester | 30" x 60" | 6.40oz/sq yd

### 5272

100% Spun Polyester | 52" x 72" | 6.40oz/sq yd

### 5296

100% Spun Polyester | 52" x 96" | 6.40oz/sq yd

### 52114

100% Spun Polyester | 52" x 114" | 6.40oz/sq yd

### 90132

100% Spun Polyester | 90" x 132" | 6.40oz/sq yd

### 90156

100% Spun Polyester | 90" x 156" | 6.40oz/sq yd

### Colors Available



Colors: White, Ivory, Brown, Black, Navy Blue, Maroon, Red, Forest Green, Gold, Sandalwood

\*Color availability varies per size

## 100% SPUN POLYESTER ROUND TABLE CLOTHS

Table cloths available in assorted colors.

### 80RD

100% Spun Polyester | 80" Round | 6.40oz/sq yd

### 90RD

100% Spun Polyester | 90" Round | 6.40oz/sq yd

### 108RD

100% Spun Polyester | 108" Round | 6.40oz/sq yd

### 120RD

100% Spun Polyester | 120" Round | 6.40oz/sq yd

### 132RD

100% Spun Polyester | 132" Round | 6.40oz/sq yd

### Colors Available



Colors: White, Black, Ivory

\*Color availability varies per size

## EXTRA WHITE SPUN TABLE CLOTHS

Table cloths available in extra white.

### AMR2121WHT

100% Spun Polyester | 21" x 21" | 7.20oz/sq yd

Colors: White

### AMR4242WHT

100% Spun Polyester | 42" x 42" | 7.20oz/sq yd

Colors: White

### AMR5252WHT

100% Spun Polyester | 52" x 52" | 7.20oz/sq yd

Colors: White

### AMR6262WHT

100% Spun Polyester | 62" x 62" | 7.20oz/sq yd

Colors: White

### AMR7272WHT

100% Spun Polyester | 72" x 72" | 7.20oz/sq yd

Colors: White

### AMR8585WHT

100% Spun Polyester | 85" x 85" | 7.20oz/sq yd

Colors: White

### AMR9090WHT

100% Spun Polyester | 90" x 90" | 7.20oz/sq yd

Colors: White

### AMR5272WHT

100% Spun Polyester | 52" x 72" | 7.20oz/sq yd

Colors: White

### AMR52114WH

100% Spun Polyester | 52" x 114" | 7.20oz/sq yd

Colors: White

### Color Available



# CUSTOM

*Garments*

EACH CUSTOMER DESERVES THE OPPORTUNITY TO STAND  
APART AND WE ARE HERE TO MAKE THAT A REALITY







## GARMENT BODY

What is the number one ingredient to any custom garment? The body of the garment! We have multiple platforms to begin your custom build ranging from chef attire to pants and smocks. Each type of garment body can be customized even further.



## COLOR

Where does the flavor come from? The primary zest of our garments comes with your color selection. We have a variety of different colors available and also are able to do custom colors! Here is a sample of our color offerings.



With over 40 years in the garment manufacturing industry, we know the power of a creative solution and a little ingenuity. With American Dawn's Custom Garments, anything is possible. Whether it is in the restaurant, food processing or food packaging industry, we have the expertise and skill to create custom garments to meet your needs. From specialized chef coats, frocks to smocks, head covers to cover garments, American Dawn can help.



## COLLAR

From kitchens to food processing, collars set the tone. The environment will determine the collar.

- Stand-up
- Point
- Shawl
- Lapel
- No-collar

## CLOSURE

How the garment is kept on is up to you.

- Hidden
- Solid Buttons
- Pearl Buttons
- Knots
- Grippers
- Snaps
- Tie

## POCKETS

Pockets help in holding useful tools to boost productivity.

- Hex Pocket
- Inside Hex Pocket
- Patch Pocket
- Inside Patch Pocket
- Spade Pocket
- Inside Spade Pocket
- Thermometer/Pencil Pocket

## TRIMS

A way to denote job responsibilities while also keeping uniforms aesthetically pleasing.

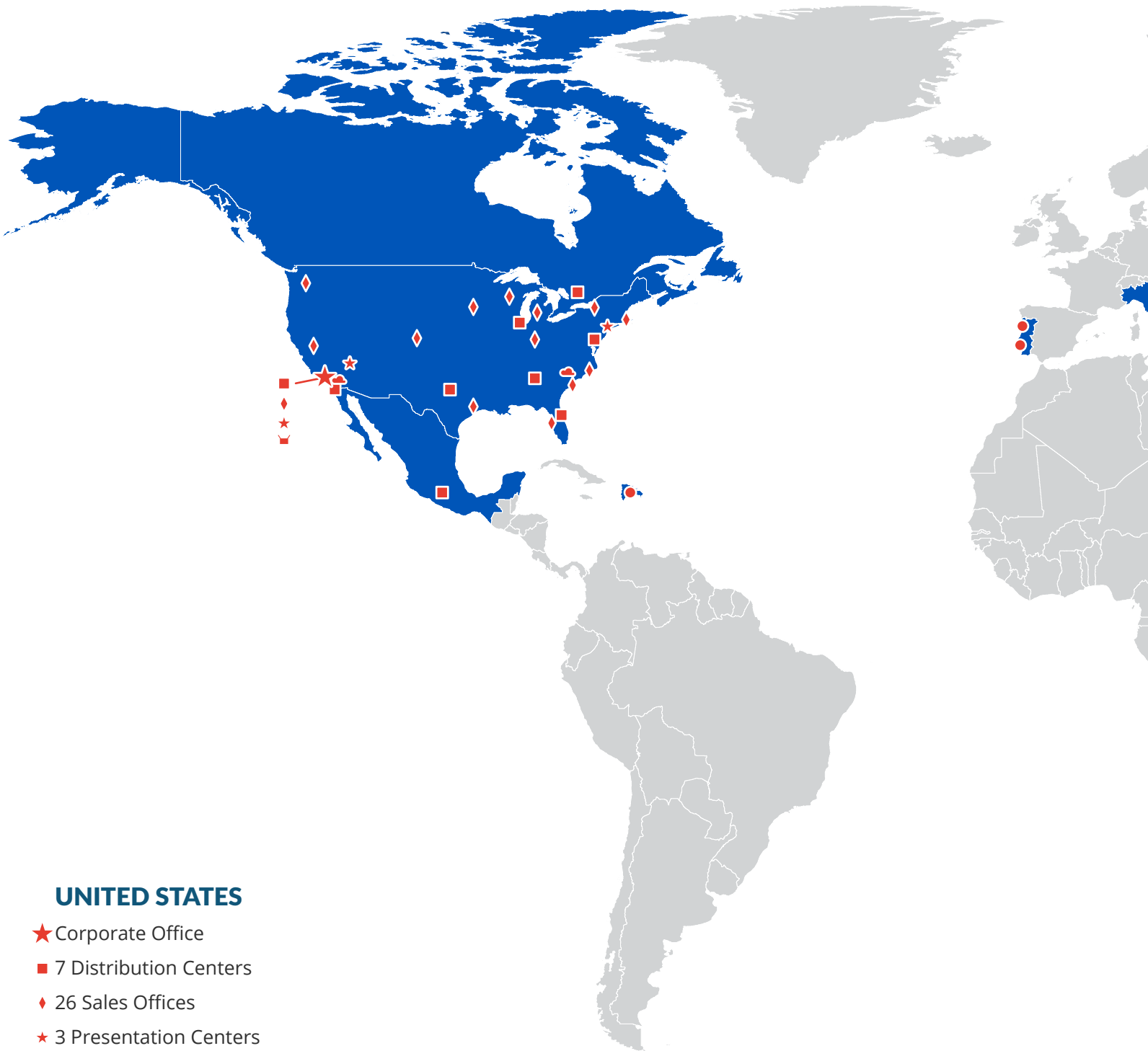
- Contrasting Cuff
- Contrasting Collar
- Contrasting Buttons
- Front Piping
- Collar Piping
- Cuff Piping
- Pocket Piping

## CUFF

The cuff style is determined by the type of job to be done.

- Vented
- Snap
- Hemmed
- Elastic
- Knit Cuffs

# ADI AMERICANDAWN<sup>®</sup> GLOBAL FOOTPRINT



## UNITED STATES

- ★ Corporate Office
- 7 Distribution Centers
- ◆ 26 Sales Offices
- ★ 3 Presentation Centers
- ▲ 2 Cloud Support Centers
- ▼ 1 Sample Fulfillment Center
- ▲ 1 Partner Test Lab
- 1 Partner Mill

## CANADA

- 1 Distribution Center

## MEXICO

- 1 Distribution Center
- 1 Captive Mill

## DOMINICAN REPUBLIC

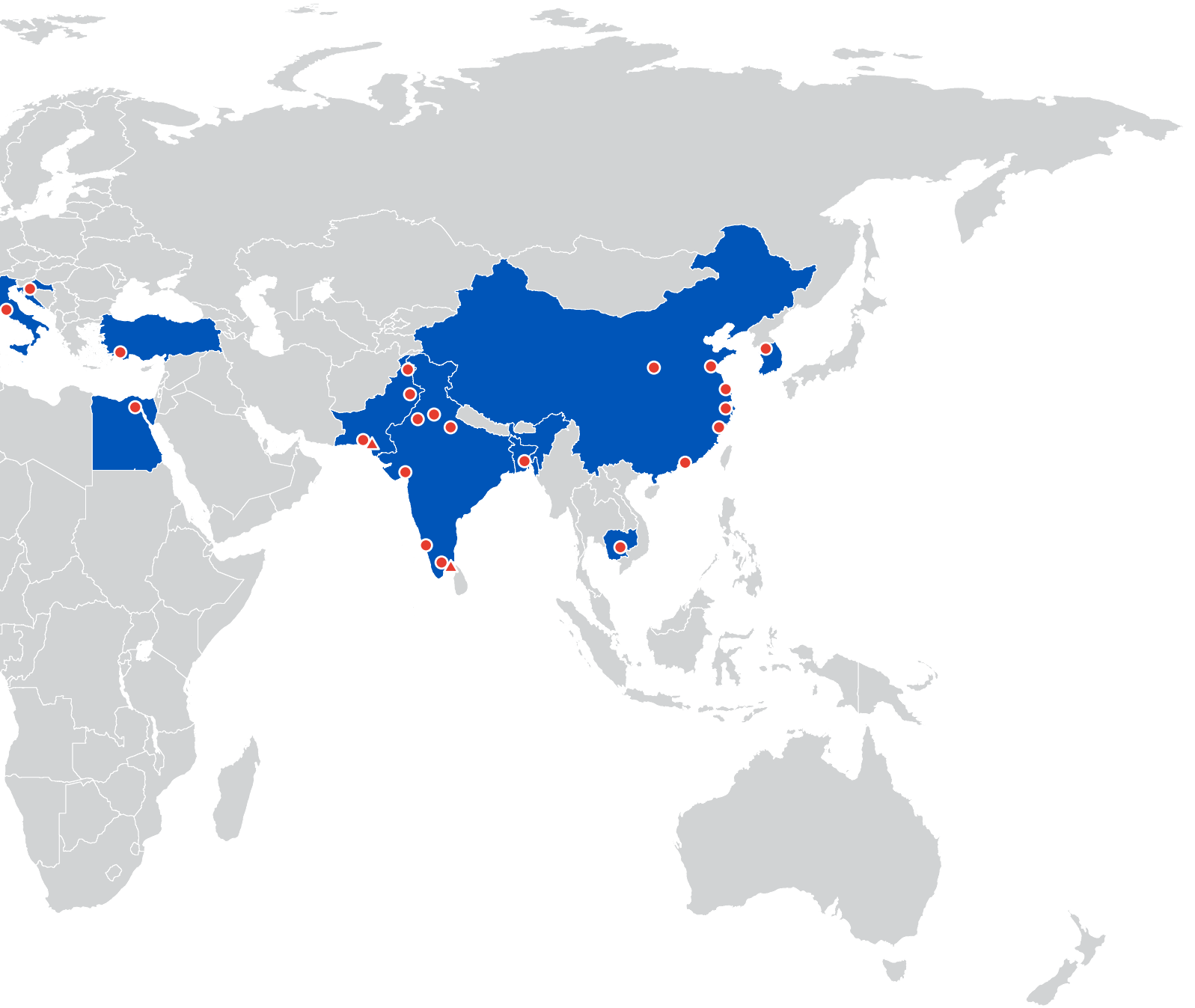
- 1 Distribution Center
- 1 Partner Mill

## PAKISTAN

- ▲ 1 Textile Lab
- 1 Owned Mill
- 1 Captive Mill
- 3 Partner Mills

## INDIA

- ▲ 1 Textile Lab
- 1 Owned Mill
- 1 Captive Mill
- 4 Partner Mills



## CHINA

● 7 Partner Mills

## ITALY

● 1 Partner Mill

## CROATIA

● 1 Partner Mill

## BANGLADESH

● 1 Partner Mill

## TURKEY

● 2 Partner Mills

## PORTUGAL

● 2 Partner Mills

## EGYPT

● 1 Partner Mill

## SOUTH KOREA

● 1 Partner Mill

## CAMBODIA

● 1 Partner Mill

# GLOBAL LEADER IN REUSABLE TEXTILE SOLUTIONS<sup>SM</sup>

## CORPORATE HEADQUARTERS

401 West Artesia Boulevard  
Los Angeles, CA 90220

## SERVICE DISTRIBUTION CENTERS

Los Angeles, CA | Atlanta, GA | Chicago, IL | Houston, TX | Philadelphia, PA

## PRESENTATION CENTERS

Los Angeles, CA | Atlanta, GA | New York City, NY

# ADI AMERICANDAWN<sup>®</sup>

800 821 2221 | [imagine@americandawn.com](mailto:imagine@americandawn.com) | [americandawn.com](http://americandawn.com)

CUSTOM

NAPERY

TOWEL

