

**TRANSFORMING
LAB SAFETY**
Introducing the **ONLY**
breathable **FR/CP** lab coat

PROTECTIVE LAB COATS 2017-2018

Workrite®
 **FR**  **CP™**

Workrite®
 **FR**

Flame Resistant / FR

Chemical-Splash Protection / CP

Workrite® **FRCP**

THE SCIENCE OF PROTECTING YOUR SCIENTISTS

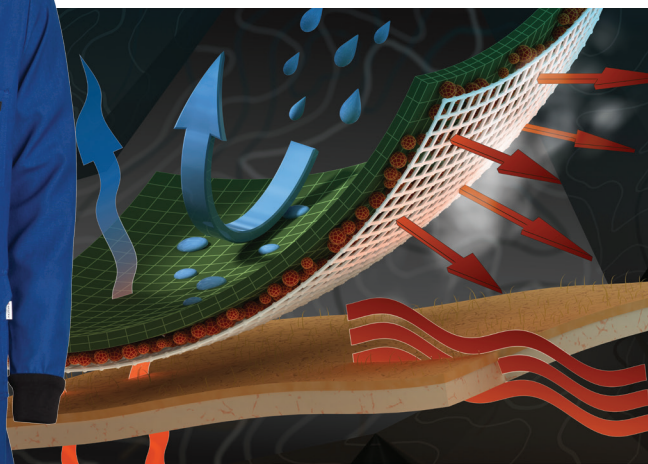
*Featuring the new breathable flame-resistant and
chemical-splash protection lab coat. Available only
from Workrite Uniform Company.*



"I look at this new material as being **absolutely transformative** and a **real game changer** in laboratory safety."

— Craig Merlic, Associate Professor of Chemistry, Chair of the UCLA Chemistry Safety Committee

Workrite Uniform Company's expanded line of lab coats now includes the **first-of-its-kind** Workrite FR/CP Lab Coat, built with flame-resistant (FR) properties and chemical-splash protection (CP). Featuring Nomex® IIIA with Westex ShieldCXP™, this innovation increases compliance by providing a comfortable, dual-protection lab coat solution.



Workrite Uniform's FR and FR/CP coats offer breathability and can be worn comfortably over normal clothes. Key features include multiple pockets for ample storage and front closures from above the knee to the neck for maximum coverage. The FR/CP lab coat provides an additional level of protection with splash-resistant pass-throughs and knit cuffs. Workrite Uniform is also the only FR clothing manufacturer to offer a lab coat specifically designed for women, increasing safety with an optimal fit.

The **first-of-its-kind** Workrite FR/CP Lab Coat is a transformative innovation in laboratory safety. Combining the durable FR protection of Nomex® IIIA fabric with the chemical-splash protection (CP) of Westex ShieldCXP™, it protects against short-term thermal hazards and inadvertent liquid chemical splashes, while also offering superior comfort and flexibility.

DuPont™
Nomex®
NEVER QUIT.™

NOMEX
50
YEARS
NEVER QUIT.™

Westex
ShieldCXP™



FLAME RESISTANCE + CHEMICAL-SPLASH PROTECTION

Available **ONLY** from Workrite Uniform Company

A



Black lay-down collar for easy recognition as a CP lab coat



Splash-resistant pass-throughs for added protection



A. FR/CP LAB COAT

Concealed snap front closure // Black lay-down collar for easy recognition as a CP lab coat // FR-only knit cuffs – safer than typical open cuff // Splash-resistant pass-throughs // Pockets include one double-stitched chest pocket and two double-stitched lower pockets with flaps

353CH-45

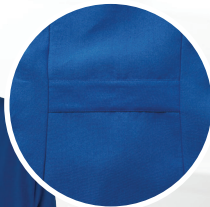
UL 2112 1 AFRV 5.6

Nomex® IIIA // 4.5 oz

Color: Royal // Sizes: Reg XS*, S - XL, 2XL* - 5XL*
Long XS* - 5XL*

*Size subject to surcharge

B



Waistband in back for a tailored fit



B. WOMEN'S FR/CP LAB COAT

Concealed snap front and neck closures // Black lay-down collar for easy recognition as a CP lab coat // FR-only knit cuffs – safer than typical open cuff // Splash-resistant pass-throughs // Waistband in back for a tailored fit // Pockets include one double-stitched chest pocket and two double-stitched lower pockets with flaps

354CH-45

UL 2112 1 AFRV 5.6

Nomex® IIIA // 4.5 oz

Color: Royal // Sizes: XS*, S - XL, 2XL* - 5XL*

*Size subject to surcharge



C. LAB COAT WITH KNIT CUFFS

Traditional collar // FR knit cuffs — safer than typical open cuff // Concealed snap front closure // Side pass-through access to inner clothing // Pockets include two double-stitched chest pockets and two large double-stitched lower pockets

357NX-45

IL 2112 51 APV 4.4

Nomex[®] IIIA // 4.5 oz

Color: Royal // Sizes: Reg XS*, S - XL, 2XL* - 5XL*
Long XS* - 5XL*

**Size subject to surcharge*



FR knit cuffs for added safety

DuPont[™]
Nomex.
NEVER QUIT.™

D. WOMEN'S LAB COAT WITH KNIT CUFFS

Traditional collar // FR knit cuffs — safer than typical open cuff // Waistband in back for a tailored fit // Concealed snap front closure // Side pass-through access to inner clothing // Pockets include one double-stitched chest pocket and two large double-stitched lower pockets

361NX-45

IL 2112 51 APV 4.4

Nomex[®] IIIA // 4.5 oz

Color: Royal // Sizes: XS*, S - XL, 2XL* - 5XL*

**Size subject to surcharge*



Waistband in back for a tailored fit

DuPont[™]
Nomex.
NEVER QUIT.™



DuPont[™]
Nomex
NEVER QUIT.[™]
Westex
UltraSoft[®]



DuPont[™]
Nomex
NEVER QUIT.[™]



DuPont[™]
Nomex
NEVER QUIT.[™]

A. LAB COAT

Five-button front closure // Side pass-through access to inner clothing // Pockets include two double-stitched chest pockets and two large double-stitched lower patch pockets

350NX-60

UL 2112 1 6.0

Nomex[®] IIIA // 6 oz
Colors: Navy, Red, Royal
Sizes: Short XS* - 5XL*
Reg XS*, S - XL, 2XL* - 5XL*
Long XS* - 5XL*

* Size subject to surcharge, sizes vary by color, please call for details



350UT-95

UL 2112 2 12.4

UltraSoft[®] // 9.5 oz
Color: Navy
Sizes: Short XS* - 5XL*
Reg XS*, S - XL, 2XL* - 5XL*
Long XS* - 5XL*
* Size subject to surcharge

B. WOMEN'S LAB COAT

Traditional collar // Waistband in back for a tailored fit // Concealed snap front closure // Side pass-through access to inner clothing // Pockets include one double-stitched chest pocket and two large double-stitched lower pockets

351NX-60

UL 2112 1 6.0

Nomex[®] IIIA // 6 oz
Color: Royal // Sizes: XS, S - XL, 2XL* - 5XL*
*Size subject to surcharge

C. 4-POCKET LAB COAT

Traditional collar // Concealed snap front closure // Side pass-through access to inner clothing // Pockets include two double-stitched chest pocket and two large double-stitched lower pockets

352NX-60

UL 2112 1 6.0

Nomex[®] IIIA // 6 oz
Color: Royal // Sizes: Reg XS, S - XL, 2XL* - 5XL*
Long XS* - 5XL*

*Size subject to surcharge





THE RIGHT FIT FOR EVERY LAB

Innovations in Laboratory Safety



LAB COAT
STYLES 350NX60



LAB COAT
STYLES 350UT95



LAB COAT
STYLES 351NX60
& 352NX60



**LAB COAT WITH
KNIT CUFFS**
STYLES 357NX45
& 361NX45



**FR/CP
LAB COAT**
STYLES 353CH45
& 354CH45

HAZARDS



FIRE HAZARD



CHEMICAL SPLASH



CHARACTERISTICS

COMFORTABLE FEEL



LIGHTWEIGHT



BREATHABLE



DURABLE



EASY ON/OFF



OXIDIZER RESISTANT



KNIT CUFFS





WORKRITE
UNIFORM CO.

EST. 1973

1701 North Lombard Street, Suite 200
Oxnard, California 93030

1-800-521-1888 / 805-483-0175 / Fax 805-483-0678
Monday–Friday / 6 a.m.–4 p.m. PST

workritefr.com / workritefrcp.com / Follow us on [f](#) [t](#) [v](#)

An affiliate of Williamson-Dickie Manufacturing Company